



# Karibu RILx23!



**RILx23**

NAIROBI

**Welcome to Response Innovation  
Lab's global meet-up for  
humanitarian innovators and their  
supporters**



# What is RILx23?

- A safe place to explore the humanitarian innovation space – its achievements, challenges and future
- An opportunity to network within the global humanitarian innovation community and beyond
- A way for RIL to learn from others so that we can adapt our programming to the needs, realities and opportunities of tomorrow



**RILx23**

NAIROBI



# What is NOT RILx23

- A formal gathering with official speeches, formal representation, keynotes, etc...
- A pitching contest
- A hackathon (unless...)
- A one-shot event – RIL Conveners take place regularly through RIL Response Labs and Affiliate Facilities



**RILx23**

NAIROBI



# Some ground rules

- Feel free to walk out at any time to take calls, get some fresh air, etc...
- Participate as much as you can and provide opportunities for others to participate too
- Chatham House Rules apply – feel free to speak from the heart as an individual
- Please respect the (tight) schedule
- Take advantage of the networking hour to have side conversations



**RILx23**

NAIROBI

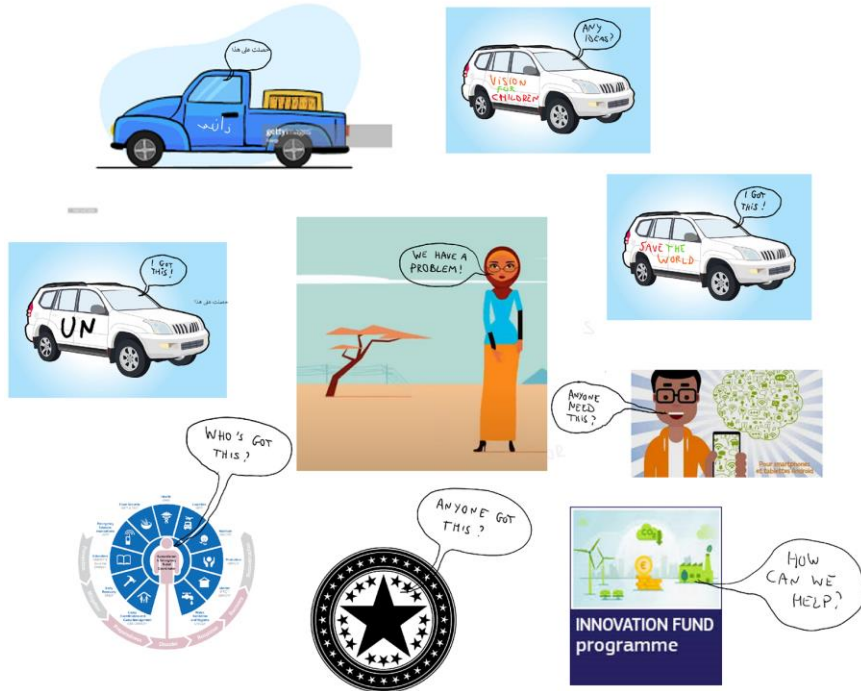


RESPONSE  
**INNOVATION**  
LAB

Collaborate. Localize. Solve.



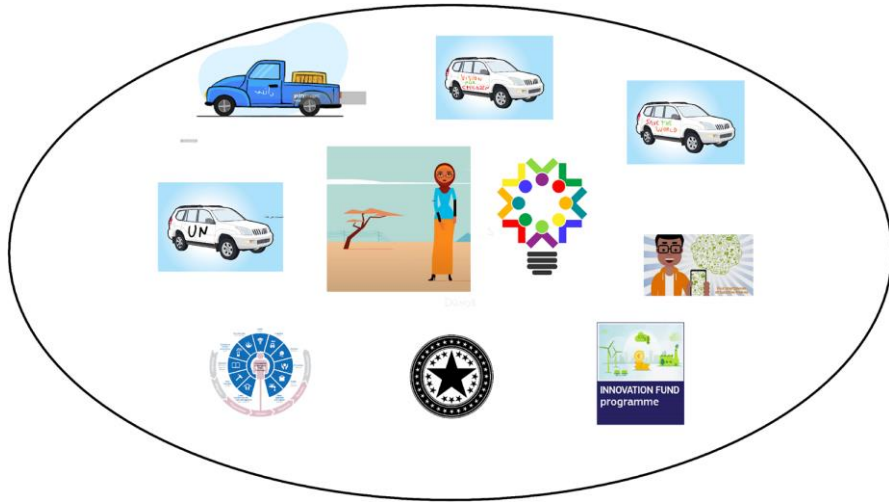
# The Problem



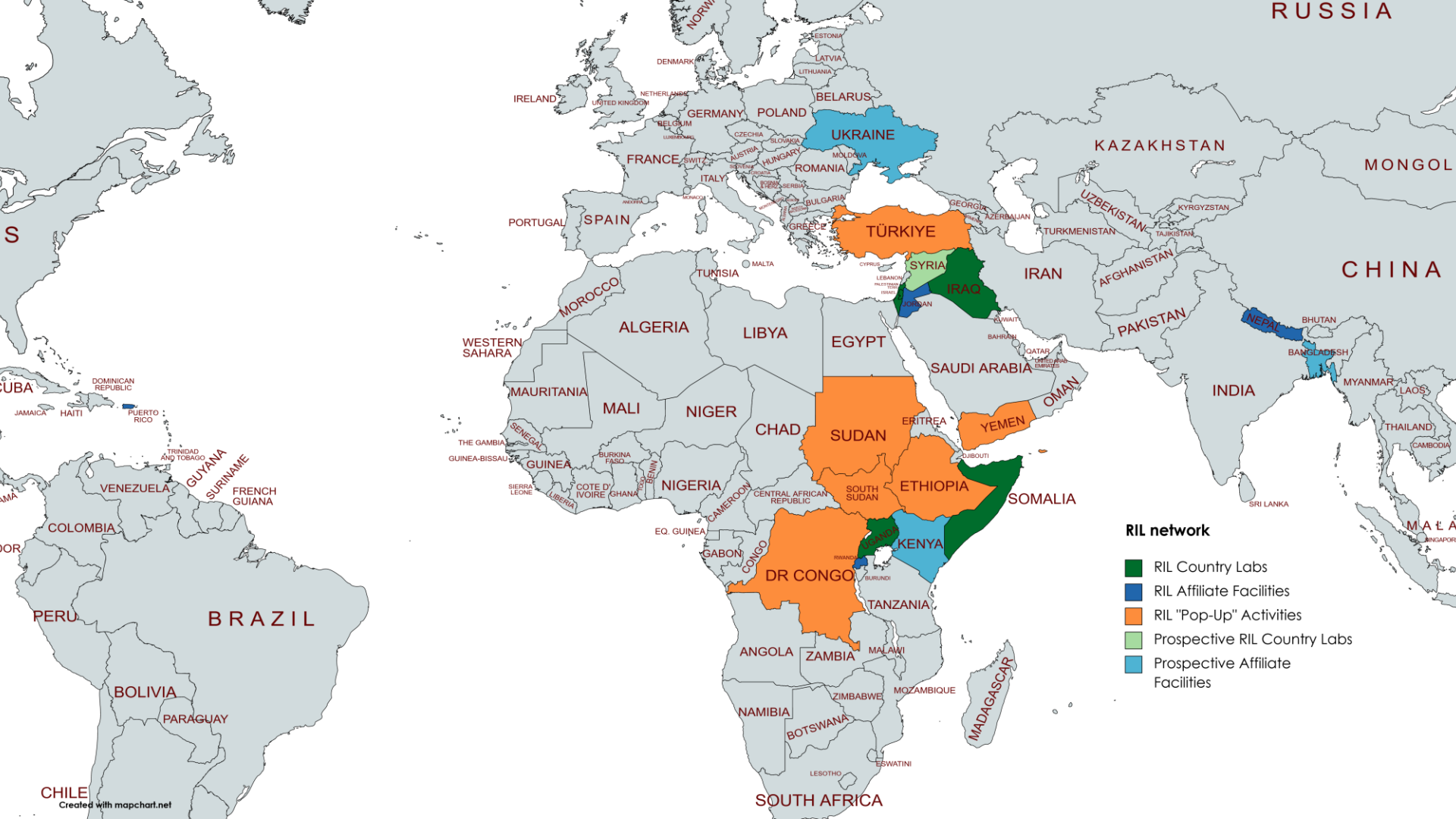
Responses generate **high demand** for solutions and **high supply** of global and local innovations but **limited coordination** and **high barriers of entry** for non-traditional actors, resulting in **poor scalability** of solutions.



# The Solution



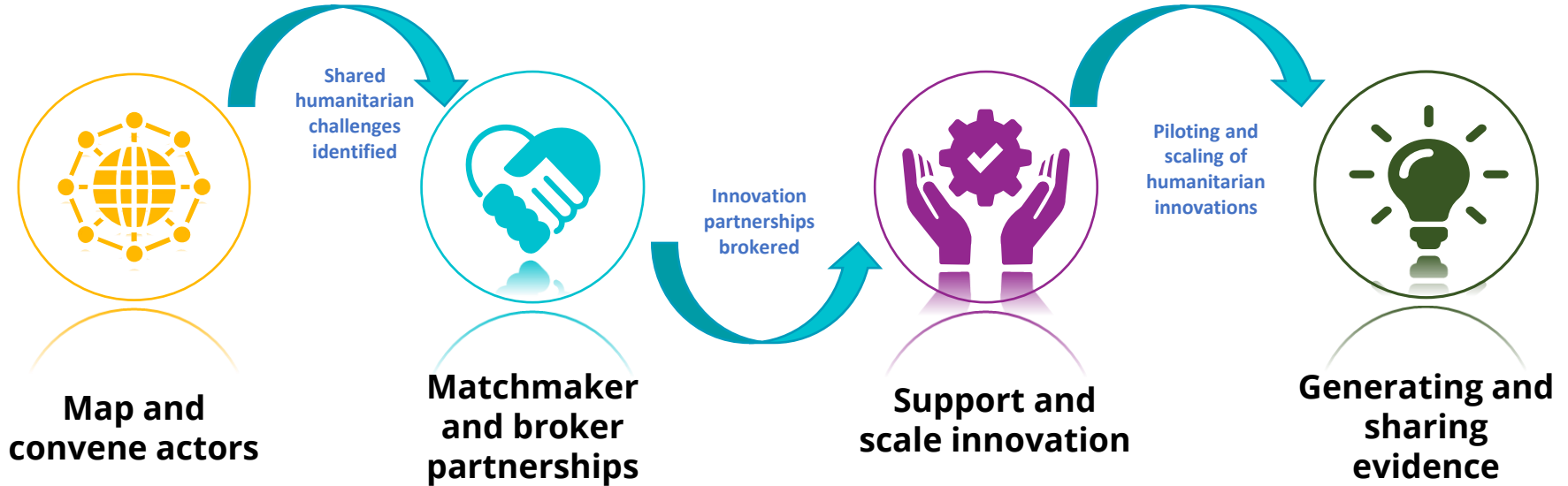
Building up humanitarian innovation ecosystems where innovation demand and supply connect, new partnerships are created, local actors thrive and scaling works.







# A global network of field-based platforms that:





# Our Current Partnerships

## Global Core Partners



## Global Strategic Partners



ENGINEERS WITHOUT BORDERS-USA

## Sample Local Partners



## Sample Funding Partners





# Our Structure

RIL Executive Committee



Central Support Unit

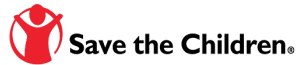


RIL Country Lab

RIL Country Lab

RIL Country Lab

RIL Country Lab



TBD

RIL Affiliate Facility

RIL Affiliate Facility

RIL Affiliate Facility

RIL Affiliate Facility





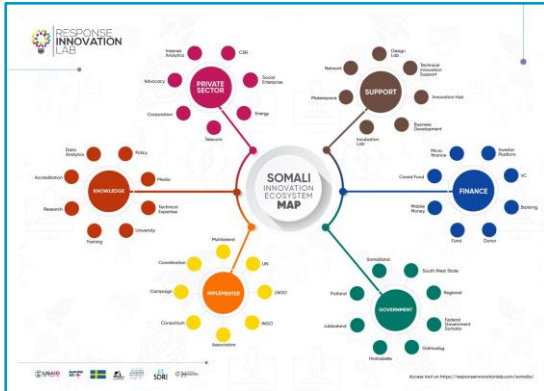
# Mapping & Convening

We map humanitarian innovation ecosystems to identify the “customers” and suppliers of solutions. We convene key actors to better understand the humanitarian challenges that lead to demand for specific innovations.



## Interactive Humanitarian Ecosystem Mapping

[Click image below](#)



## Co-hosted information sessions

## In-person Convener events and challenge identification workshops

[Click picture to launch video](#)





# Matchmaking and Brokering



We connect the demand for innovation with the supply, favoring early adoption of locally-developed solutions. We conduct research into shared challenges and provide humanitarian organizations with innovation suggestions.

## MatchMaker

Click image below for video



## Online and in-person networking



## Connecting local innovators with global opportunities





# Support and scale innovation

We provide technical, promotional and fundraising assistance to innovators and humanitarian actors looking to adopt new solutions. We provide seed funding for innovation pilots and organize open challenge competitions.



## Seed-funding for local testing

[Click to see](#)



## Innovation showcasing

[Click to see](#)



### Call for ideas – Green Innovation Challenge Fund

Applications are open until Wednesday 25 September 2019 for individuals, NGOs, CSOs, CBOs, startups, small or micro-enterprises.

Apply if you have an innovative solution for refugees and host communities in the field of energy and environment that can be tested in West Nile.

Please check eligibility criteria and details on the focus areas (8 challenges) here before applying:  
[https://www.akaboxi.com/apply?ref=11905026\\_pwr12](https://www.akaboxi.com/apply?ref=11905026_pwr12)  
[info@akaboxi.com](mailto:info@akaboxi.com)

2 to 4 projects will be selected for financial and technical support to pilot their innovations/ideas in Bakhid. The winners will share a fund of USD 30,000 UGX, 109 million.

The application form is available here  
<https://forms.gle/2z13U3D3ka7D3dAC>

In case of questions contact:  
[uganda@responseinnovationlab.com](mailto:uganda@responseinnovationlab.com)

RESPONSE INNOVATION LAB | Save the Children | MERCY CORPS | SNV | DUTCH COALITION FOR HUMANITARIAN INNOVATION

## Hosting innovation challenges

[Click to see](#)



## Technical assistance and training

[Click to see](#)

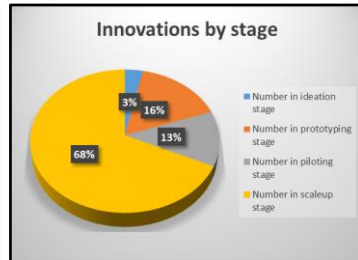
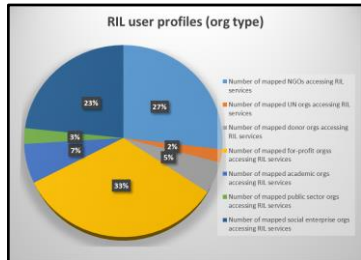
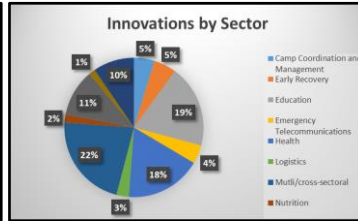
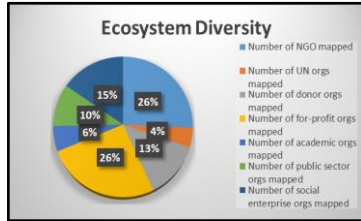


# Generating and sharing evidence

We categorize and analyze humanitarian innovation ecosystems, conduct research into field-based innovation, provide Monitoring, Evaluation, Accountability and Learning (MEAL) support to innovators.



## Live database and metrics



## Field-based ecosystem research



## MEAL support to innovation implementers

[Click to see](#)





# OUR IMPACT

## 2022



**\$5,646,98**  
raised

**>3** Million  
people reached by  
RIL-supported innovations



Support to 7 emergencies impacting  
**41.7 Million**  
people



**238** ORGANIZATIONAL  
referrals made by RIL platforms



Over **2,500** separate  
actors mapped with **500** local  
organizations benefiting from  
RIL's in-country services



Recognition from World Economic Forum, ELRHA, Start Network, USAID, and many others



## OUR AMBITION

By **2025** we will:

- **Solve 19 local humanitarian challenges** through scaled solutions
- **Support 20 humanitarian innovation** eco-systems through 4 new labs, 4 new Affiliates and 5 Pop-Up Labs
- **Transform the humanitarian innovation KM space** through new collaborative information portals
- Raise \$15m and invest **>90% locally**





Click [here](#) to see innovations supported by Response Innovation Lab



#### IRAQ



#### UGANDA





# RIL and SCC

## A natural pivot:

1. Shared history: RIL on SCC Steering Committee
2. Common approach: Convening and Matchmaking; Engagement between private and non-profit actors; focus on refugees, host communities and climate adaptation
3. Leveraging emerging RIL capacities: U-LEARN Learning Hub, Uthabiti, Regional Manager in Nairobi
4. Strong desire to step up inclusion of for-profit sector in ecosystem and innovation support work
5. A possibility to expand SCC's capture area from UG and KE to other parts of East Africa currently served by RIL





RESPONSE  
**INNOVATION**  
LAB